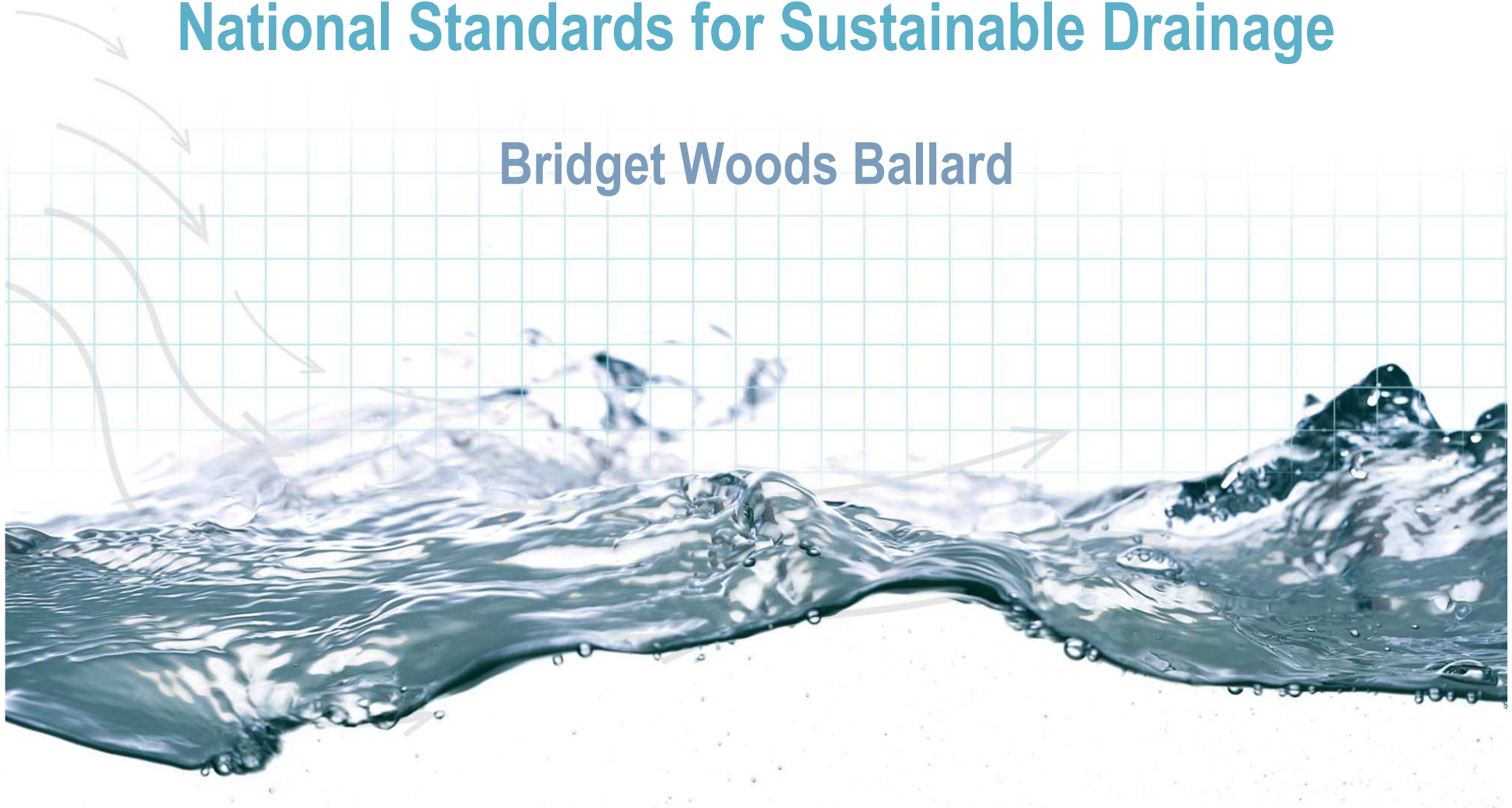




HR Wallingford
Working with water

National Standards for Sustainable Drainage

Bridget Woods Ballard



The presentation will cover....

- Main provisions in Flood and Water Management Act 2010 relating to SuDS
- Progress on secondary legislation, National Standards, guidance, phasing of implementation (latest from Defra)
- National Standards – overview
- The role of the SAB
- Timeframe

FWMA and Surface Water Drainage

- Establishes SAB in unitary and county councils
- Requires SAB approval for drainage before construction can commence
- Drainage will have to meet National Standards for design, construction, operation and maintenance
- WASC, EA, IDB, BW, HA will all be statutory consultees to the SAB



FWMA and Surface Water Drainage

- Requires the SAB to adopt and maintain approved SuDS that serve more than one property.
- Amends S106 of Water Industry Act 1991 to make the right to connect surface water to public sewers conditional on the SAB approving the drainage system as meeting the National Standards.



- Options to phase implementation of the SuDS provisions under consideration
- An IA being developed to compare the costs and benefits of phasing options



- **SAB approval (including phasing)**
- **Definitions, timeframes, fees**
- **Appeals process**
- **Enforcement of approval requirement**



- Will set out the requirements for the design, construction, and operation of SuDS
- Will be fully flexible to allow for any site conditions
- Will apply to residential, commercial and industrial developments and redevelopments
- Advisory Board guiding Defra including key stakeholder and technical experts (EA, WAG, LAs, WASCs, HBF, BPF, OFWAT and others)
- Defra will consult on draft standards

Likely...overarching principles

- Consider drainage at the earliest stage of planning
- Take account of local flood risk and planning policies including amenity and biodiversity
- Take account of opportunities for use of multi-functional space
- Take account of climate change and future development scenarios
- No connections to foul sewers



Standards... likely... to cover

Run-off destination - Where runoff may be discharged (connection to sewer as last resort).

Peak flow rate and volume – source control, minimise risk of increasing downstream flooding

Water quality - minimise risk of pollution to water bodies

Layout and Design – generic design, construction, maintenance and operation and information requirements

Future Local Standards – links with local planning

SuDS funding (Defra's current thinking)

- **SABs can charge fees for approving applications and inspections**
- **In the short-term, maintenance to be funded by Defra. Funding set aside as part of the spending review - via grants**
- **In the long-term, need for a sustainable funding stream to cover SAB costs of SuDS maintenance**

The SAB Approval Process

Two approval routes:

1. With planning application (where planning permission required)
2. A freestanding application direct to SAB (whether or not planning permission is required)

- **SAB will be a statutory consultee to planning**
- **SAB decision independent of planning decision**
- **SAB may charge a fee for drainage approval**
- **Non-performance bond option likely**

The SAB Adoption Process (1)

- **SAB required to adopt and maintain approved SuDS that serve more than one property to National Standards**
- **... once satisfied the SuDS is constructed, and functions, as approved**
- **SAB can adopt at its own initiative or at the developer's request**
- **SAB releases financial non-performance bond**

The SAB Adoption Process (2)

- **Highways' Authorities responsible for maintaining SuDS in adopted roads to National Standards**
- **Designation/land charge and register for SuDS on private land**



- **SuDS provisions in Act need to be commenced by Ministerial Order**
- **Consultation on commencement for SuDS provisions – likely to be 2012**
- **National Standards and Regulations published in advance**
- **Reviewing long-term funding options**
- **Working with key groups to build capacity (SuDS, SWMPs, other strategic frameworks)**

Specific queries...to Defra.. !

SuDS team email address- suds@defra.gsi.gov.uk

